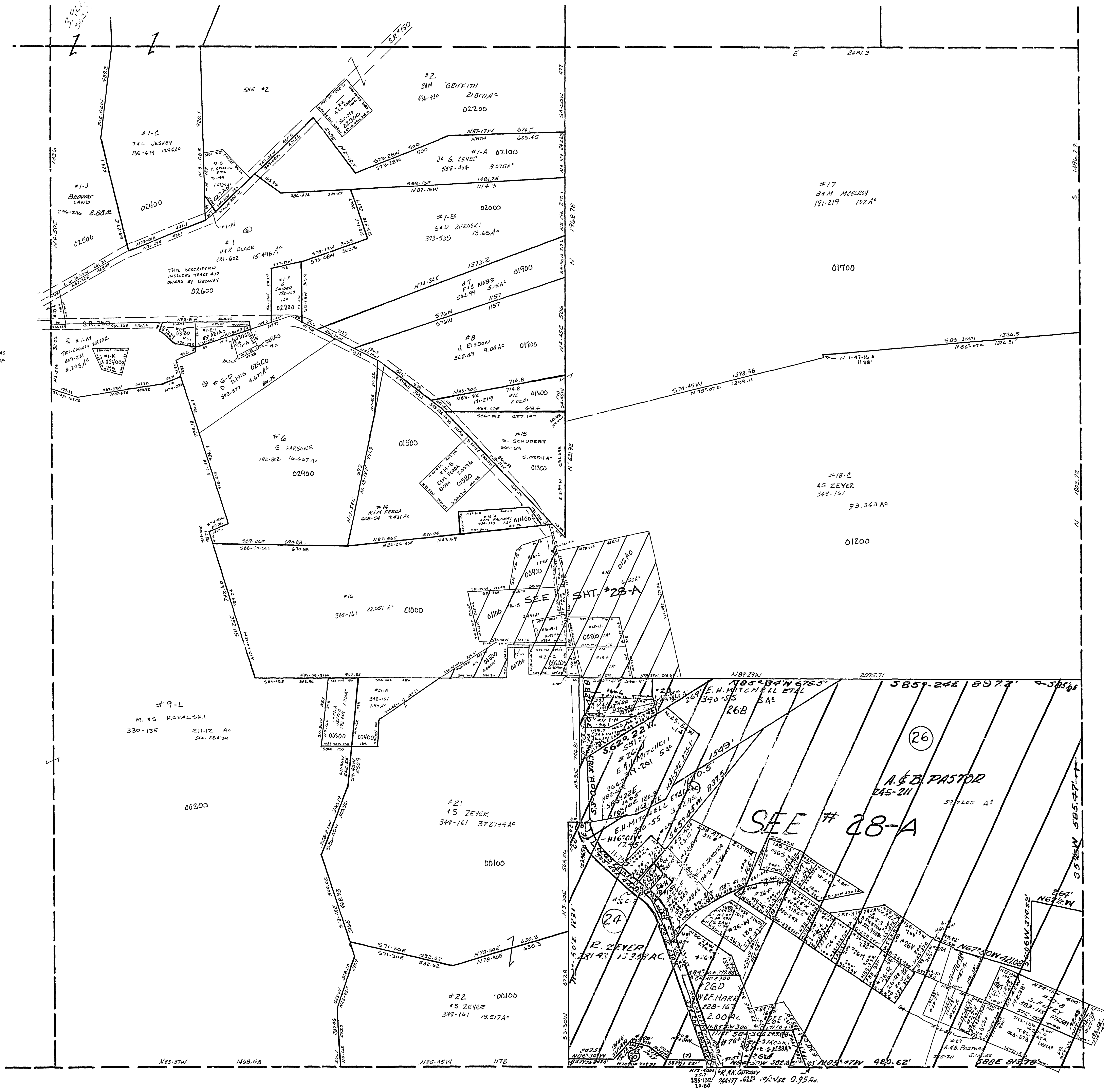


20-2800-

#10	SEE SEC. 34		
#6-D	A. LAVITCHKA	620-33	0.0544 A.
#6-A	"	"	0.2231 A.
#1-E	A. LAVITCHKA	620-33	0.426 A.
#1-E-1	D. J. HENDERSON	623-522	0.5044 A.
#1-N	T. L. JESKEY	513-612	0.067 A.
#1-K	TRI-COUNTY WATER AUTH.	73-705	0.3957 A.



MT. PLEASANT TWP.
SECTION 28, T. 7, R. 3.
SCALE: 1"=200'